

Smaart v8.5 Release Overview



Table of Contents

8.5 Update Overview	3
Release Notes.....	3
IR Mode Overhaul	5
A note about performance	5
IR Data Bar	5
IR Control Bar	6
A note about the All Bands table	6
IR Plots and Plot Legend	7
New IR Spectrograph Controls	7
Improved STI Calculation Method and Process	7
PDF SPL Reports	8
Advanced Delay Finder	8
Delay Measurement Controls	9
Filtering.....	9
Delay Table	10
MTW+	10
Meyer Sound SIM® .bin Import	10

8.5 Update Overview

The 5th major version update for Smart v8 has been released. This update includes a major overhaul of Impulse Response Mode, new features and improvements related to SPL measurements, a new “Advanced Delay Finder”, enhancements to multiple features related to Transfer Function measurements, and numerous bug and crash fixes.

This FREE update is recommended for all Smart v8 users. The most significant feature additions are outlined below.

To update, simply open Smart and click **File > Check for Updates**. Alternatively, if you’re still running v8.0^{shame} you can download the v8.5 installer from within your account at my.rationalacoustics.com.

You DO NOT need to deactivate your existing installation to install the update. If you do, you will most likely end up talking to the fine folks in Rational Tech Support.

Release Notes

- IR Mode Enhancements
 - IR Data Bar - mimics RT Mode Data Bar in form and function (Trace Info, Trace Color, nested folders, etc)
 - Measure, view, and compare multiple IR measurements in the same plot
 - IR Mode Plot Legend with "Sync Ld" function
 - Decay Markers stored in Wave file - easily manipulate marker positions and re-save
 - Improved STI calculations
 - “All Bands” dialog now shows all bands by default, instead of just some bands
 - New controls for manipulating IR Spectrograph
 - Separate Command Bars for RT and IR Modes
 - User-defined Filter option for IR Mode
 - Improved IR highpass filter and added lowpass filter (access from IR Options)
 - Banding can now be applied to IR Frequency and IR Spectrograph Plots - enable option from IR Options
 - IR "Peak to Delay" now uses current filter (previously always used Broadband data's peak)
 - IR Options reworked to fit new controls
 - IR Mode Plots now have independent Y axis panning
 - Added Option to change IR Mode frequency-domain plot scales
 - All Bands window position is now persistent
 - Improved IR saddle point calculation
- Sound Level Measurement Enhancements
 - SPL History plot is now a drag-and-drop target for log files
 - PDF SPL Reports - Generate Report now creates color PDFs
 - Added “C-A” option for Leq measurements to Advanced Meter Config
 - Alarm indicators are now always shown in SPL History, even if relevant metrics are hidden
 - Alarm level lines are now hidden if no associated metric is shown in SPL History plot
 - Added Alarm indicator hover text that shows the metric and timestamp
 - "Exposure N" and "Exposure O" now calculate by default
 - Added differential Exposure display below SPL History graph
 - Logger now automatically starts a new log file after log file is 24 hours long
 - If all calibrated inputs/devices are removed while logging is enabled, logging now stops
 - Added right-click menu for opening file location to SPL log file path field in SPL History component
 - Option to open email client at attach SPL Report after generating
 - Added "No logging inputs available" to web browser page if nothing is available

- Added new MTW+ option for Transfer Function measurements
- Added support for importing Transfer Function data from Meyer Sound SIM^{®1} 3 .bin files via Import ASCII
- Import ASCII now supports Coherence data
- API - Added generic command mechanism for passing keypresses (hotkeys) to Smaart via the API
- Live IR is now always calculated even if the LIR plot is not visible
- Improved “Unwrap Phase” - now unwraps from specified frequency center, control located in the Phase plot
- Pseudorandom Noise now has a static seed (no longer re-seeded every time the Generator is started)
- Windows users - launching Smaart while it's already open now calls the program to the top of the app stack
- Option to stop signal generator immediately after Capture/Capture All/Recapture/IR Capture
- Advanced Delay Finder - octave-filtered delay measurement with user-adjustable center frequency
- Single "Import Trace" function for importing all measurement types
- Trace Colorizer for assigning new random color to a selection of traces
- “Use Comma as Decimal Mark in Logs” setting now applies to all exported text files
- Quick access to Trace Info – press Enter key when trace is selected, Esc closes dialog
- Save As via Data Library now allows you to rename the trace (instead of only choosing a new directory)
- "New Tab" hotkey is now Alt+Shift+T
- "Gain Reporter" controls are now conditionally shown, only if Smaart I-O is connected
- "G" hotkey now works when Sig Gen Options is open
- Removed resize capability for Trace Info dialog
- Numerous bug fixes, including:
 - Fixed bug where SPL Alarms were no longer presenting in the web viewer
 - Fixed a bug where the legacy API was returning the wrong value when Smoothing was set to None
 - Fixed a bug where log files would include Max Level resets that occurred prior to the start of logging
 - Fixed a bug where Clips/Leq Resets were added to the beginning of a log file at the time that they occurred, even if they occurred before logging began
 - Fixed a bug where the Measurement Config (hammer/wrench) button didn't work in IR Mode if there were no TF pairs configured
 - Fixed a bug where Coherence Blanking was using non-squared data even if the "Squared Coh" option was enabled
 - Fixed a bug where SPL History and PDF Report graphs didn't match during Alarm events
 - Fixed a bug where TF averages using the Power option wouldn't normalize properly if some of the contributing traces had data below the Mag Threshold level
 - Fixed a bug where the "Calibration Progress" dialog was re-sampling the "Measured Level" if the Offset field was edited
 - Fixes various crashes related to changing the sampling rate

¹ SIM[®] is a registered trademark of Meyer Sound Laboratories, Incorporated.

IR Mode Overhaul

The primary focus of the IR Mode overhaul is to allow measuring, viewing, and manipulating multiple IR measurements simultaneously. The user experience in IR Mode is now similar, in many ways, to Real Time Mode, making it extremely easy to capture and analyze multiple Impulse Responses.

An IR Mode Data Bar has been added to facilitate easy access to your IR measurement library, and all configured Transfer Function measurement pairs for a given Tab can be measured simultaneously using the new IR Mode Control Bar layout.

A note about performance

IR Mode has been optimized to use less system resources than previous versions, however manipulating multiple IR measurements still requires significant graphics and CPU bandwidth, so it's possible that slower computers may not be able to take full advantage of the new Multi IR capabilities. "Business" laptops should have no problem loading and manipulating 3-4 IR measurements simultaneously.



IR Data Bar

An IR Data Bar has been added to IR Mode, mimicking the Real Time Mode Data Bars in virtually every way.

The IR Data Bar library points to the "Impulse" folder in **/Documents/Smart v8/** on your computer. To import old Impulse Response measurement for the first time, simply place them in the "Impulse" folder then open Smart. The measurements will automatically populate in the IR Data Bar library. Alternatively, use *File->Import->Trace Data File* or *Trace Folder* to import individual IRs or folders of IRs.

By default, standard wave files or IRs from older version of Smaart will be assigned a default green color. Multi-select all newly imported IRs, right-click them, and choose “Assign Random Color” to randomly colorize them. This new feature is available in all data libraries in Smaart.

Decay Marker positions are now stored within the IR wave file (they were previously stored in a separate CSV file), in the wave file header. After making adjustments to Decay Marker positions, click the “Save” button at the bottom of the Data Bar to overwrite the old positions. The “Save” function will save marker position changes to existing IRs, but it’s also analogous to the “Capture” function in Real Time Mode. After taking an IR measurement, it is not permanently stored until you click “Save”. The “Save All” button can be used to save changes to all visible IRs that have been modified, but it also functions like “Capture All” when all visible IRs are unsaved.

IR Control Bar

The IR Mode Control Bar lists all Transfer Function pairs that are configured for the application Tab in focus. If only one Transfer Function pair is configured, simply press the triangular Play button to capture an Impulse Response measurement from it. If more than one TF pair is configured, checkboxes appear to the right of each pair’s name. Click the checkbox to activate that pair for the next IR measurement. All selected TF pairs will be measured each time you click the triangular Play button.

After the Impulse Response measurement completes, the IR data is automatically shown in the plots. Triggering another IR measurement will automatically clear the cached IR measurement data and show the newly acquired data. To save the IR measurement data, use the “Save” or “Save All” buttons in the Data Bar.

If the “Cont” button is depressed, all TF pairs will be sampled continuously, and the plot will be updated in real-time, until the square Stop button is clicked. Note: this will bring many computers to a crawl if more than a few TF pairs are selected.

If the circle “Record” button is depressed, clicking Play will start a wave recording for the measurement channel of each TF pair, and the recording will only stop when you click the square Stop button. Note: graphing the IR of long wave files will also bring many computers to a crawl. You have been warned.

Clicking the circular Delay Tracker button next to each TF pair’s delay time field will trigger a “Peak to Delay” call and set the TF pair’s delay time to whatever the peak time is for the measured IR dataset for that measurement pair.

A note about the All Bands table

The All Bands table is a modeless dialog, so it can remain open while you manipulate the main Smaart program window. The All Bands table is calculated based on whatever IR trace is on the top of the plot Z-order, so you can change the Z-order with All Bands open and it will update in real-time.

IR Plots and Plot Legend

Many IRs can be displayed and compared in the same plot. IR trace manipulation (dB offset, Z order handling, etc) works identically to RT Mode in pretty much every way.

The IR Mode Plot Legend is located in the top-right corner of each IR Plot, and it works just like the RT Mode Plot Legend with the addition of a “Sync Ld” function. Sync Ld offsets all IR traces so that they overlap at the top trace’s Ld marker position. This command can also be triggered by using the [Shift + Right-click] hotkey.

By default, IR data traces are optimized before graphing; only the “top” of the IR trace is plotted (instead of all values in the dataset). To turn this optimization off, go to *Options->Impulse Response* and uncheck the setting for “Optimize Graphing”.

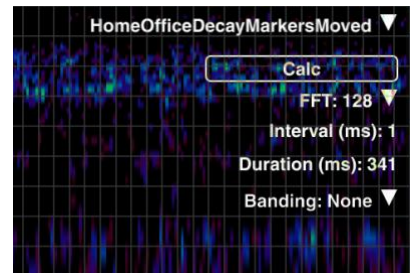
New IR Spectrograph Controls

The IR Spectrograph controls have been enhanced to provide greater flexibility and precision. The “Overlap” (%) control has been replaced with controls for:

Interval (ms): time between consecutive FFTs

Duration (ms): specify a stopping point to save system resources

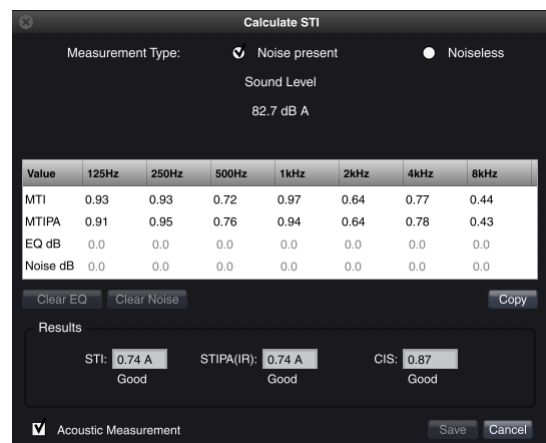
Banding or Smoothing: apply Banding or Smoothing to the underlying data.



Improved STI Calculation Method and Process

The STI calculation dialog in IR Mode has been overhauled. The new user interface is more approachable and a bit more foolproof than the old implementation. STI can be calculated from any suitable impulse response measurement that is captured using v8.5+. If an IR was captured using earlier versions of Smart, or captured outside of Smart, only the “Noiseless” calculation method is supported, requiring the input of measured “Speech Level” and “Noise Level” values to produce accurate results. If an impulse response measurement is not suitable for calculating STI, or necessary input parameters are missing, the dialog prints an error describing the problem. Relevant STI calculation parameters can be stored to the IR wav file header after the calculation completes by clicking the “Save” button.

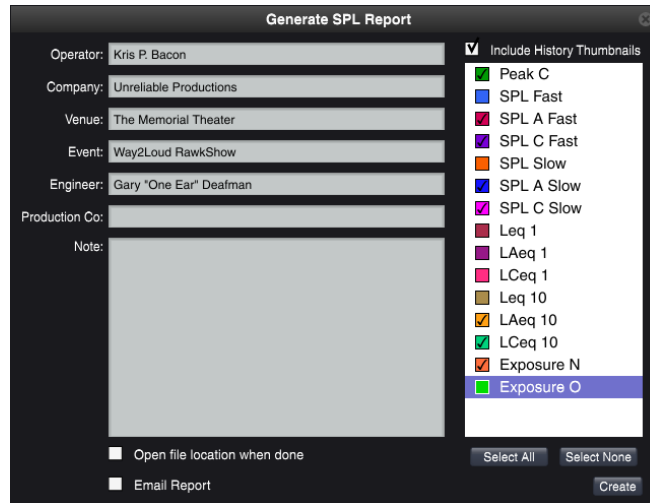
Additionally, under-the-hood improvements have been made to ensure the highest possible accuracy when using this indirect method for STI calculation. The full *m* value tables for both STI and STI(PA) can now be copied to the Clipboard for external analysis.



Acquiring a suitable impulse response measurement, choosing the correct measurement type for the system under test, and providing accurate input parameters requires a thorough understanding of the STI standard to achieve trustworthy results. The Smart v8 User Guide will be updated to include a comprehensive section explaining STI and the measurement process.

PDF SPL Reports

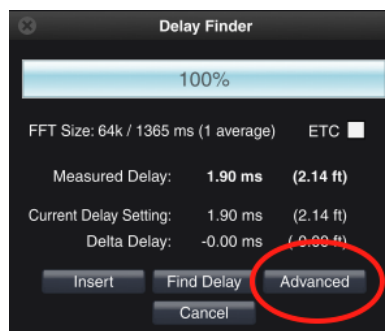
The Generate Report function for creating summaries of SPL Log files now produces color PDFs. The creation process is similar to the process in 8.4: choose a time region of the log file from which you want to generate a report using the SPL History dialog, then click “Generate Report”. A dialog appears allowing you to add notes and choose which metrics are included in the report. There is an option to “Open file location when done”, and “Email Report”. Clicking “Email Report” will attempt to open the default mail client and attach the PDF to a new email. **Note:** in Windows, this only works for mail clients that support the MAPI protocol. In macOS, this only works with Apple’s Mail app. This feature will be expanded in the future.



The PDF report contains a header region similar to the old text file version of these reports, a color graph with all metrics plotted, and separate graphs showing each individual metric.

Advanced Delay Finder

The new Delay Finder dialog is a modeless window that contains more advanced filtering and analysis capabilities than the prior version. After triggering a delay “Find”, click the “Advanced” button to access the Advanced Delay Finder.



An impulse analysis plot is provided at the top of the dialog, showing the result of the measurement. The locked cursor is automatically set to the highest peak found in the ETC/IR. The locked cursor can be moved

manually using the standard locked cursor commands (see Help Files). **Note:** the Transfer Function measurement does not need to be running to use the Advanced Delay finder; it will sample the TF pairs directly even if the measurement is not running in the background. You can also toggle the Generator on and off using the G hotkey even with the Advanced Delay Finder in focus.



Delay Measurement Controls

Find Button: Re-runs the IR measurement using the selected transfer function measurement pair.

Insert: Replaces the current delay setting in the selected Transfer Function measurement pair.

Store: Creates a new table entry with the found delay time (locked cursor time coordinate from plot).

Status Bar: Shows the status of the IR measurement when the measurement is running. See current delay locator for behavior.

Filtering

An arbitrary-frequency bandpass filter can be applied to the IR measurement to further isolate the measurement. The filter controls consist of a “Filter” button to turn filtering on and off and a text field that accepts an integer number of Hz for the center frequency of the filter. Both controls are located in the top-right corner of the IR plot.

The upper limit for the center frequency is 73% of the Nyquist frequency for the sampling rate used to record the impulse response. The lower limit is 20 (Hz). At frequencies between the lower limit and 40% of the Nyquist frequency for the current sample rate, a one-octave wide filter is used. A 1/3-octave wide filter will be used between 40% and 73% of Nyquist.

Delay Table

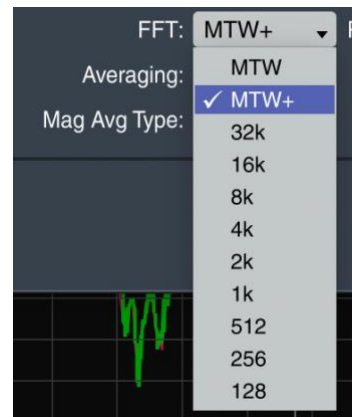
The Delay Table provides a way to store multiple measured delay times for quick access.

- Clicking the “Store” button to the left of the table creates a new table entry with the found delay time (or locked cursor time coordinate from plot).
- Selecting the T₀ box makes that entry the new “Measured” delay time (to the left of the table) and updates all Delta values against that. Clicking “Insert” will then insert the “Measured” delay time into the current Transfer Function measurement engine.
- The *Name* column is editable. Selecting it highlights that row, double selecting the *Name* allows you to re-name that row. A selected entry may be moved up or down in order, or deleted, using the controls below the table.
- Δ Delay is calculated by subtracting the absolute delay time in the selected T₀ row from the delay time setting in each row.
- Δ Distance is calculated based on each row’s Δ Delay and current global *Speed of Sound* setting specified in General Options dialog.

MTW+

MTW+ is a supercharged version of MTW that uses more FFTs across the measured frequency range and reduces gaps in the MTW calculation pipeline that may result in missing rapid transient events. MTW+ uses a Hamming data window, while MTW uses a Hann window. At this time it is not possible to average MTW+ traces with traces derived from MTW/power-of-2 FFTs.

MTW+ is available as an FFT choice on a global or per-measurement level, and it supports both 48k and 96k sample rates. The program default is still “MTW”.



Meyer Sound SIM[®] .bin Import

The “Import ASCII” dialog now supports importing SIM[®] 3 .bin files. Simply choose “SIM .bin” in the FFT droplist, then browse to the location of the .bin file and choose it. **Note:** SIM[®] .bin files pair with a corresponding .xml file, which *must* be in the same directory as the .bin file for the import to succeed.

At this time, only Transfer Function data is extracted from the .bin file. Each measurement group within the .bin is analyzed and the Room, Processor, and Result data is extracted to separate Smaart .trf trace files. For consistency, the extracted Coherence data is square-rooted; if the desire is to emulate a SIM[®] machine’s display, enable the “Squared Coherence” setting in Transfer Function Options to square all Coherence traces prior to display.

For more information about these new features, please refer to the Help Files within Smaart v8. If you need technical support, please send an email to support@rationalacoustics.com and one of our support agents will assist you. You can also call our offices during business hours (9AM-5PM Eastern) Monday through Friday to speak to a support agent on the phone.



Rational Acoustics, LLC

32 Crabtree Lane

Woodstock, CT 06281 USA

telephone: (+1) 860 928-7828

e-mail: info@rationalacoustics.com

web: <http://www.rationalacoustics.com>